



Zhengzhou Defy Mechanical&Electrical Equipment Co., Ltd

Add: No.96 Ruida Road, High-Tech Zone, Zhengzhou City, Henan Province, China

Cel: +86-15286806707 Tel: +86-371-63330731 Email: nora@zzavatar.com

Quotation of Inno-1 Robot Arm

Date: June 1, 2021



No.	Product	Qty.	Unit Price
1	Full set unsembled (control board + gripper + power supply)	1 set	USD235/set EXW price

Trade terms:

1. Payment: 100% by T/T in advance.
2. Delivery time: 3-7 working days after payment
3. Packing: Carton box
4. Offer validity: Within one month.

Payload 300g

Specification of control board:

Control channel: Control 32 channels at the same time. (Adjustable steering speed)



Zhengzhou Defy Mechanical&Electrical Equipment Co., Ltd

Add: No.96 Ruida Road, High-Tech Zone, Zhengzhou City, Henan Province, China

Cel: +86-15286806707 Tel: +86-371-63330731 Email: nora@zzavatar.com

Communication input: USB or serial port (TTL)

Signal output: PWM (accuracy 0.5us).

Baud rate range: 9600 19200 38400 57600 115200 128000.

PCB size: 63.5mm × 43.5mm.

Mounting hole spacing: 55*35.5mm.

Storage space: 16M U disk onboard.

Brief Introduction:

Inno-1 is a 6-DOF robotic arm (waist, big arm, small arm, arm rotation, wrist, wrist rotation), it has advantages of all-metal robotic arm, high-quality bottom-joint and all-steel bearing, stable operation. The arm size sometimes has subtle changes due to different batch.

The arm includes 4 MG966R dual-bearing metal gear servos and 2 MG90S metal gear servos.

Arm joints are all using bearing connections.

Features:

1. The design concept is derived from ABB palletizing robots. The principle structure is the same, and the motion range is greater than other same level arms.
2. Frame material is CNC machining thick hard aluminum alloy. More durable than 1.5mm stainless steel.
3. Full arm uses 4 MG966R metal gear servos and 2 MG90S metal gear servos to ensure more lasting power.
4. Arm joints are all using bearing connections for better performance.
5. According to the general servo load, it accurately calculated arm size and improves the mechanical performance of the robot arm.
6. Its size and precision are particularly suitable for teaching and testing.
7. The arm base is fixed with a high-quality all-steel bearing, no shaking of the arm motion and better load performance.
8. Product standard configuration includes fixture fixing plate, users can add DIY sucker, electromagnet, fork, paw, gripper, etc. according to raw material characteristics.



Zhengzhou Defy Mechanical&Electrical Equipment Co., Ltd

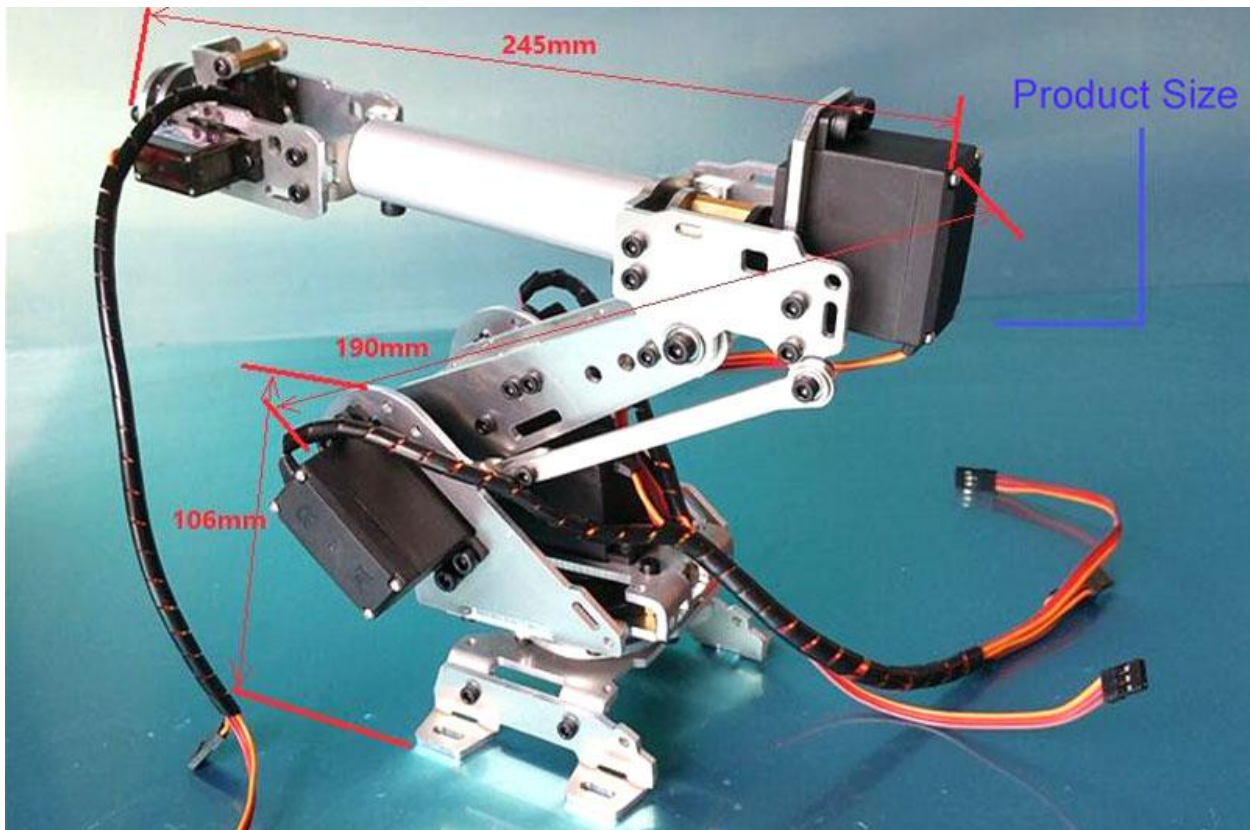
Add: No.96 Ruida Road, High-Tech Zone, Zhengzhou City, Henan Province, China

Cel: +86-15286806707 Tel: +86-371-63330731 Email: nora@zzavatar.com

Note, all packages are shipped in bulk and require user self-assembly and commissioning (assembly instructions provided).

Note:

The length of the robot arm is not the longer the better. The longer arm creates larger load on the servo, the more it will directly affect the life of the servo. If the load is too large, the servo circuit will be burned and the servo gear will be damaged. The mechanical arm has a direct influence on the certain performance. The longer the arm is, the smaller the load can be. The robot arm calculates the optimal size based on the gear load and the servo circuit load of the universal metal servo, and exerts the best performance of the servo.

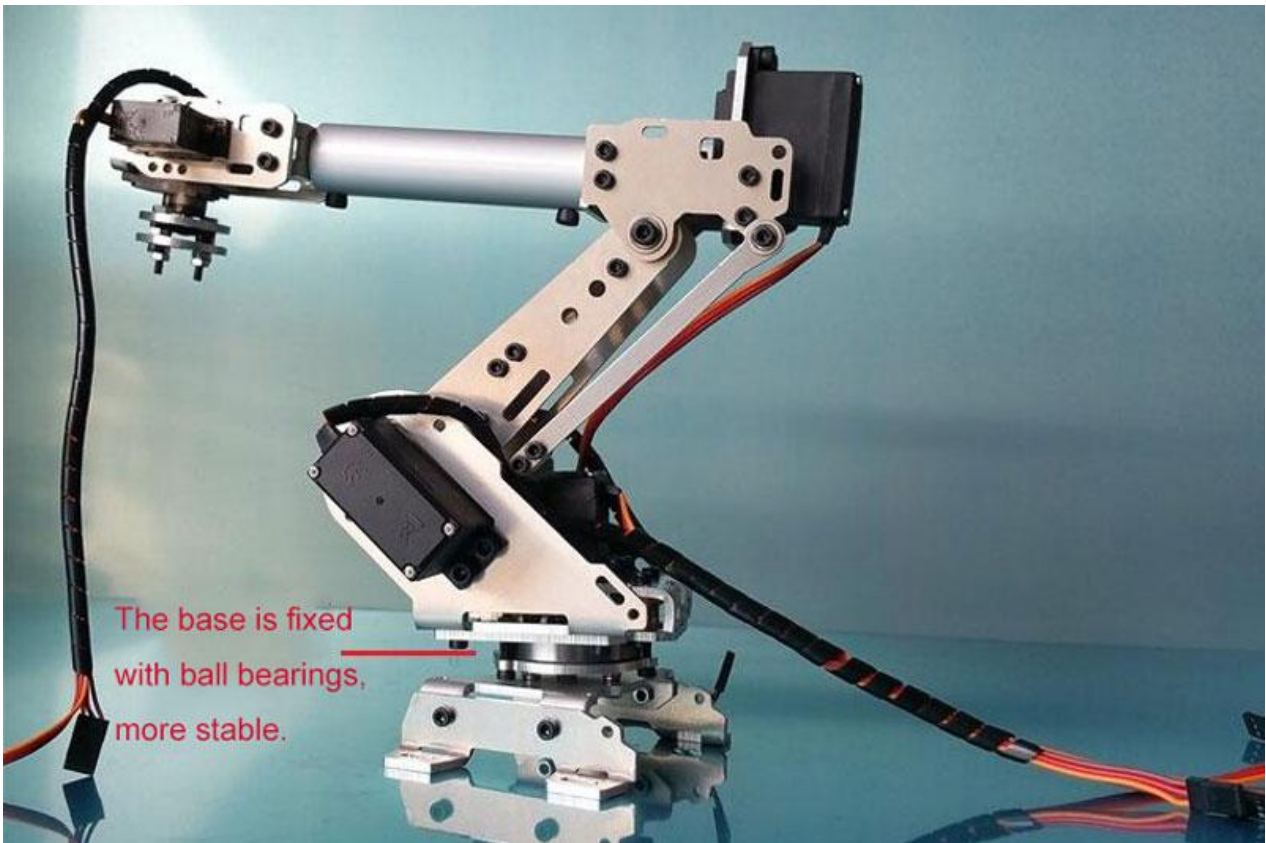
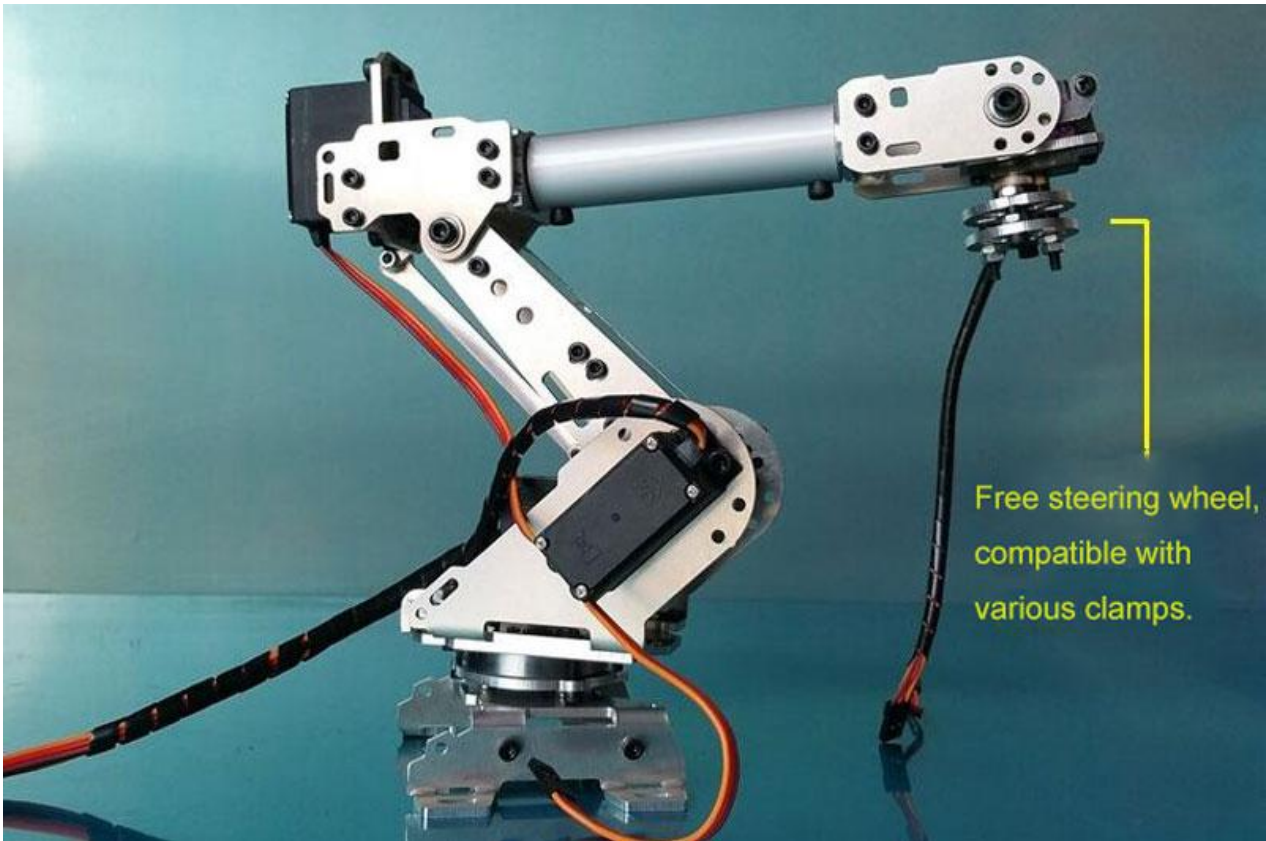




Zhengzhou Defy Mechanical&Electrical Equipment Co., Ltd

Add: No.96 Ruida Road, High-Tech Zone, Zhengzhou City, Henan Province, China

Cel: +86-15286806707 Tel: +86-371-63330731 Email: nora@zzavatar.com

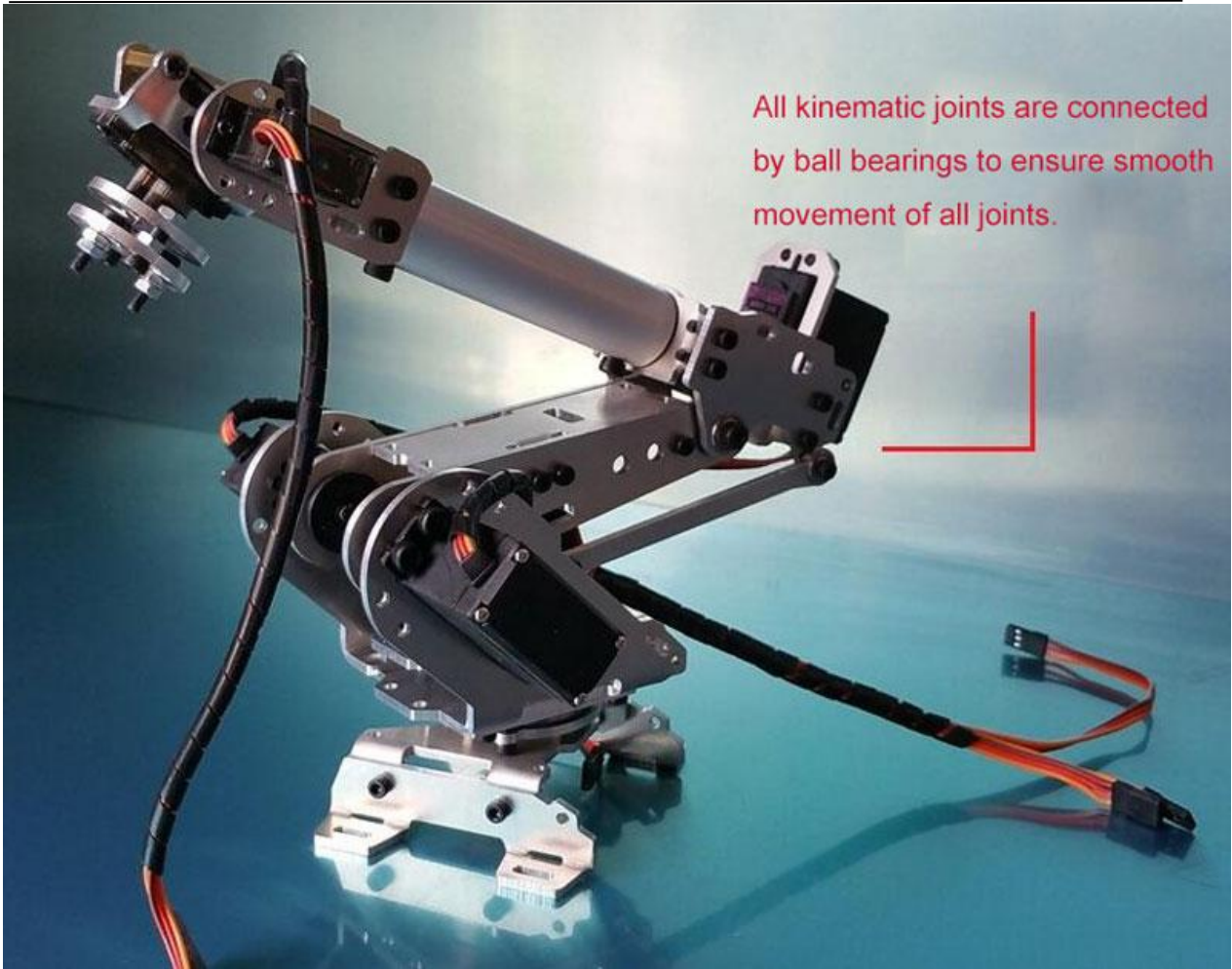




Zhengzhou Defy Mechanical&Electrical Equipment Co., Ltd

Add: No.96 Ruida Road, High-Tech Zone, Zhengzhou City, Henan Province, China

Cel: +86-15286806707 Tel: +86-371-63330731 Email: nora@zzavatar.com



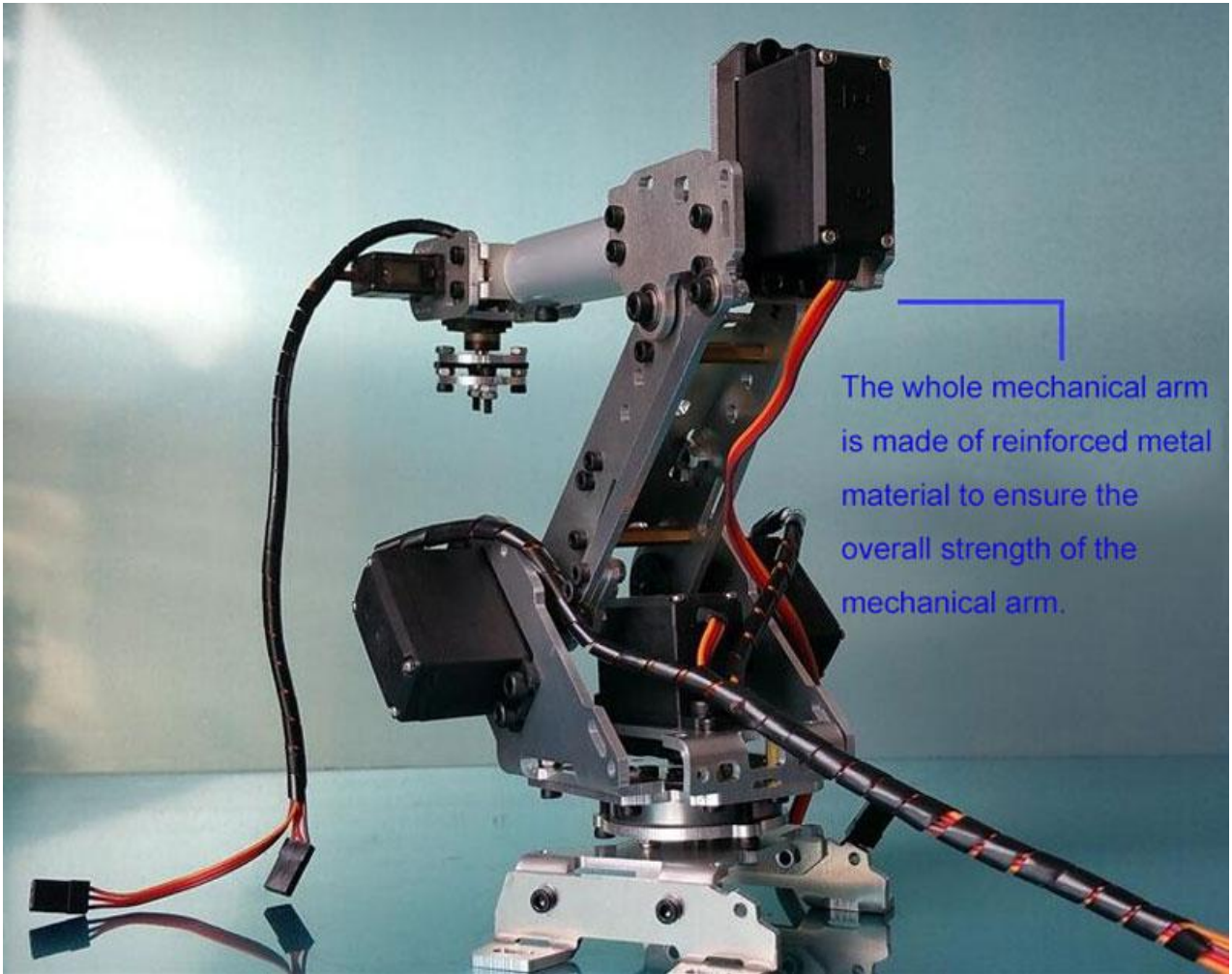
All kinematic joints are connected by ball bearings to ensure smooth movement of all joints.



Zhengzhou Defy Mechanical&Electrical Equipment Co., Ltd

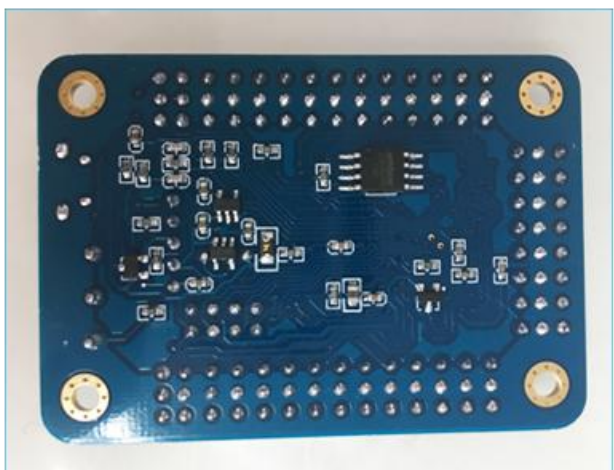
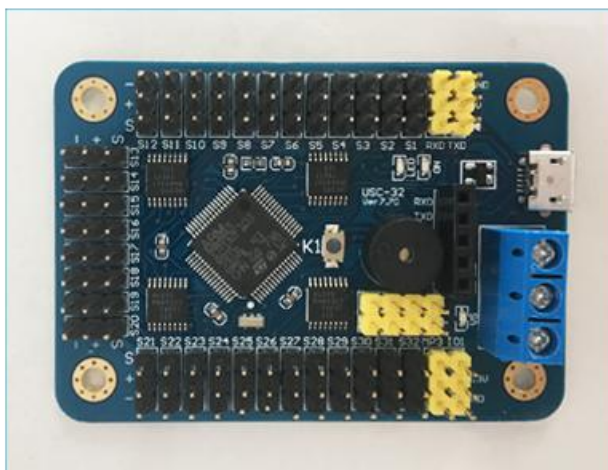
Add: No.96 Ruida Road, High-Tech Zone, Zhengzhou City, Henan Province, China

Cel: +86-15286806707 Tel: +86-371-63330731 Email: nora@zzavatar.com



The whole mechanical arm is made of reinforced metal material to ensure the overall strength of the mechanical arm.

Control board:





Zhengzhou Defy Mechanical&Electrical Equipment Co., Ltd

Add: No.96 Ruida Road, High-Tech Zone, Zhengzhou City, Henan Province, China

Cel: +86-15286806707 Tel: +86-371-63330731 Email: nora@zzavatar.com

Packing list:

